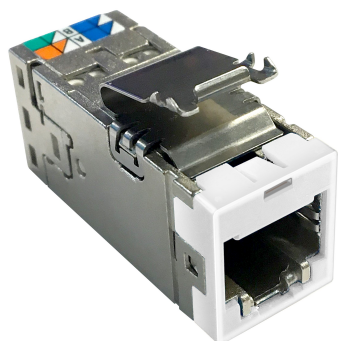


# 1-2153449-3 | AMP-TWIST SLX, 6AS,A.WHT



AMP-TWIST SLX Series Modular Jack, category 6A, shielded , 4 Pair, without dust cover, alpine white

## Product Classification

<b>Regional Availability</b>	Asia   Australia/New Zealand   EMEA   Latin America
<b>Portfolio</b>	NETCONNECT®
<b>Product Type</b>	Modular jack
<b>Product Series</b>	SLX Series

## General Specifications

<b>ANSI/TIA Category</b>	6A
<b>Cable Type</b>	Shielded
<b>Color</b>	Alpine white
<b>Conductor Type</b>	Solid   Stranded
<b>Integrated Dust Cover Type</b>	None
<b>Mounting</b>	SL Series faceplates and panels
<b>Mounting Note</b>	Color matches with SL-style Alpine white or Pro white Faceplates and Surface Mount Boxes
<b>Outlet Type</b>	Standard
<b>Termination Punchdowns, minimum</b>	5 times
<b>Termination Tool</b>	SL Termination tool
<b>Termination Type</b>	IDC
<b>Transmission Standards</b>	ANSI/TIA-568-C.2   ISO/IEC 11801 Class EA
<b>Wiring</b>	T568A   T568B

## Dimensions

<b>Panel Cutout, recommended</b>	14.78 x 20.07 mm (0.58 x 0.79 in)
<b>Panel Thickness, recommended</b>	1.6 mm   0.063 in

# 1-2153449-3 | AMP-TWIST SLX, 6AS,A.WHT

<b>Height</b>	16.13 mm   0.635 in
<b>Width</b>	14.44 mm   0.569 in
<b>Depth</b>	36.8 mm   1.449 in
<b>Compatible Cable Diameter, maximum</b>	8.5 mm   0.335 in
<b>Compatible Insulated Conductor Diameter, maximum</b>	1.6 mm   0.063 in
<b>Contact Plating Thickness</b>	1.27 µm
<b>Compatible Conductor Gauge, solid</b>	26–22 AWG
<b>Compatible Conductor Gauge, stranded</b>	26–24 AWG

## Electrical Specifications

<b>Remote Powering</b>	Fully supports the safe delivery of power over LAN cabling described by IEEE 802.3bt (Type 4) and complies with the unmating under electrical load requirements prescribed by IEC 60512-99-002
<b>PoE Durability</b>	Supports IEEE 802.3bt Type 4 (90 W) applications after 3000 plug to jack mating cycles

## Material Specifications

<b>Contact Base Material</b>	Beryllium copper
<b>Contact Plating Material</b>	Gold
<b>Material Type</b>	Polycarbonate   Zamak

## Mechanical Specifications

<b>Plug to Jack Mating Cycles</b>	Complies to IEC 60603-7 series
-----------------------------------	--------------------------------

## Environmental Specifications

<b>Operating Temperature</b>	-10 °C to +60 °C (+14 °F to +140 °F)
<b>Flammability Rating</b>	UL 94 V-0

## Packaging and Weights

<b>Packaging Material</b>	Standard
<b>Packaging quantity</b>	24
<b>Packaging Type</b>	Bag   Box

## Regulatory Compliance/Certifications

<b>Agency</b>	<b>Classification</b>
CHINA-ROHS	Below maximum concentration value

# 1-2153449-3 | AMP-TWIST SLX, 6AS,A.WHT

---

RCM	Compliant to electrical safety & telecommunications requirements
REACH-SVHC	Compliant as per SVHC revision on <a href="http://www.commscope.com/ProductCompliance">www.commscope.com/ProductCompliance</a>
ROHS	Compliant
UK-ROHS	Compliant

